

DriverLINX™ and Borland Delphi or Builder

Introduction

DriverLINX will run under Borland Delphi or Builder as easily as it does under Visual Basic. Borland development environments interface to DriverLINX through the ActiveX API. There are some differences from Visual Basic in setting up the Borland IDE to use DriverLINX. These differences are easily accounted for, but their existence is not always obvious.

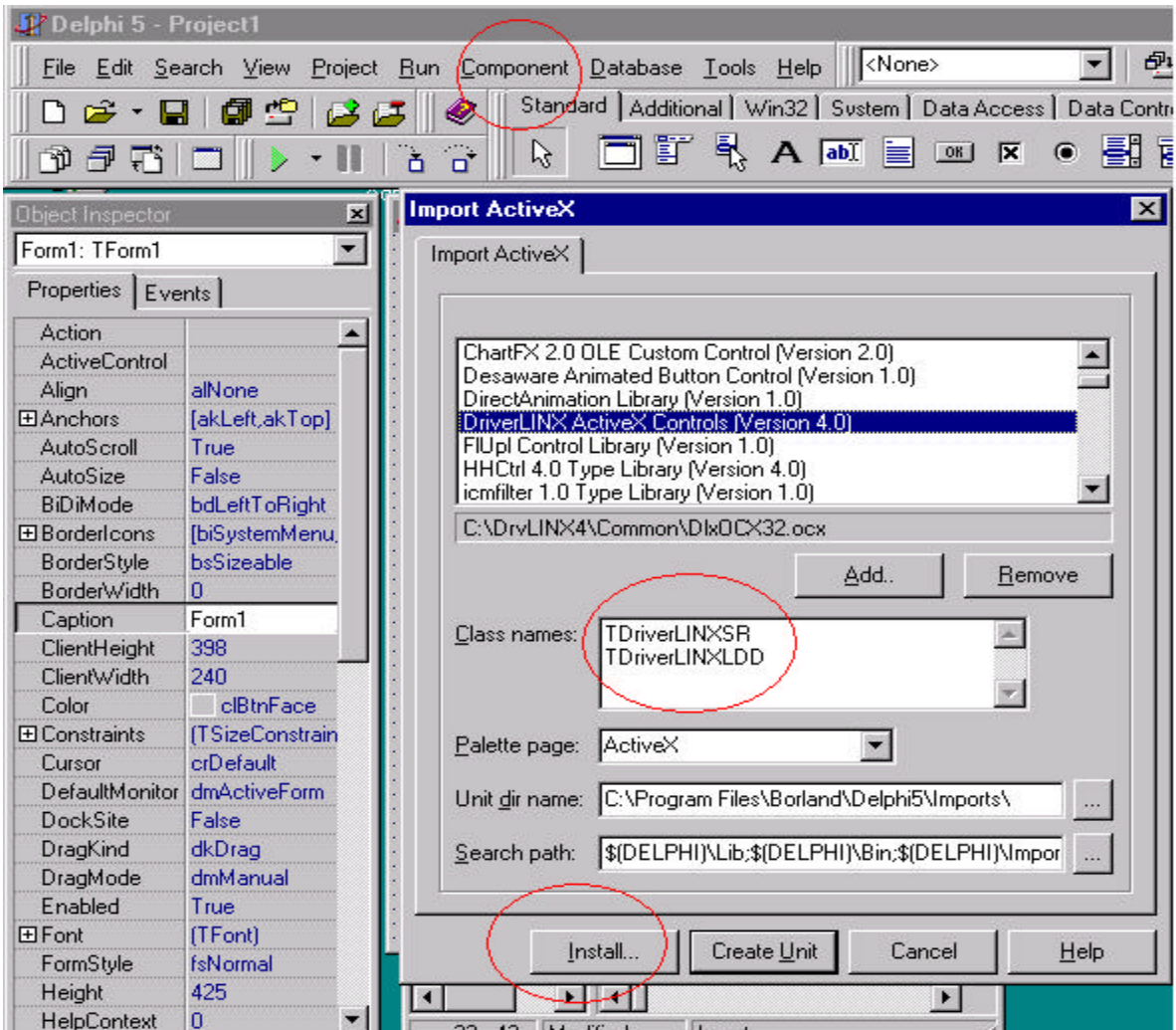
Example programs are distributed on the DriverLINX CD. Also check the technical support section of the Keithley web site for Frequently Answered Questions, updates to DriverLINX software, manuals and example programs.

Necessities

To use DriverLINX with a Borland product, you must first install the DriverLINX ActiveX controls into the ActiveX palette of the Borland IDE. This is done by the following steps:

1. Run Delphi or Builder.
2. Select *Import ActiveX...* from the *Component* menu.
3. Scroll down the alphabetical list of all controls installed and highlight DriverLINX ActiveX Controls.
4. **Note the class names.** Builder 3.0 will typically import the controls as TDriverLINXSRProxy and TDriverLINXLDDProxy. Any class name can be OK, however, the class names used when importing the controls must be the same as those used on another computer for the two computers to be able to share applications. Builder 4.0 and Delphi 5.0 use the class names as shown in the screen capture below. Example programs posted to the Keithley web site use these class names as well. If your class names are different (Builder 3.0 for example) edit the class name to agree with what is shown below if you want to make use of example programs provided by Keithley. If you've already imported the controls with a different class name, see the section below on removing the controls. Then import them again, with the class names that our example programs expect.
5. Click *Install* to dismiss the *Import ActiveX* dialog box.
6. Click *OK* to dismiss the *Install Components* dialog box.

Below is a screen capture of this Import ActiveX control process:



At this point Delphi or Builder will generate a "package" for the DriverLINX ActiveX controls. This unit or package defines classes for the two controls of DriverLINX:

| <u>Control</u> | <u>Class</u> |
|---------------------------|----------------|
| Service Request | TDriverLINXSR |
| Logical Device Descriptor | TDriverLINXLDD |

Two new controls will appear on the ActiveX tab in the Delphi or Builder IDE. This process can take several seconds. Below is a screen shot of a successful ActiveX import. Each time Delphi or Builder are invoked, these controls will appear on the ActiveX palette.



Removing Controls

To remove the DriverLINX ActiveX controls from the IDE, click on the *Install Packages* selection from the Components menu. From the list of packages, select *User Components* or *Borland User Components*. Click on the *Components* button to view/verify the selected package contains the DriverLINX controls. Click OK to dismiss the window displaying the controls associated with a selected package. Click the *Remove* button to remove the package and controls from the Borland IDE.